



### Remote Probe Accessory



Part Number 605830-0001.  
Maintains comfortable viewing by providing optical pickup of RPM sources in tight or hard to access areas. Easy plug-in connection.

The Timer & Counter Company  
+44 (0)1794 514445  
www.thetimerandcountercompany.com

**Shirt-pocket size.  
Contacting or  
non-contacting . . .  
an essential part  
of your tool kit.**



The Dynapar brand Series HT50 hand tachometer provides a convenient, accurate means of measuring rotary or surface speeds on all types of machinery. For non-contacting measurement, the tachometer optically detects a reflective target on the rotating object to read revolutions per minute. Where in-contact measurement is desired, an accessory adaptor is used with the appropriate device – a wheel for surface speed or rubber tip for shaft rotation.

- Optical non-contact or in-contact measurement
- Compact and lightweight
- Simple push button operation
- Automatic display hold for three minutes or until another reading
- 30 to 30,000 RPM measurement range with 0.1 resolution
- Automatic shutoff for power savings

The Series HT50 hand tachometer can be used for everyday checks of motors, conveyors, HVAC equipment and line speeds. It also provides an excellent reference source for checking speed indicators on machinery control panels.

## SPECIFICATIONS

**Measurement Range:** 30.0 to 30,000 RPM; 3.00 to 3000.00 meters or yards per minute using in-contact adaptor and appropriate wheel

**Resolution:** 0.1 RPM

**Accuracy:** RPM:  $\pm 0.01\%$ , Surface Speed:  $\pm 0.05\%$ ; and  $\pm 1$  digit

**Optical Range:** 50 to 300 mm (2 to 12 inches) using reflective tape

**Update Time:** 1 to 2 seconds sample time

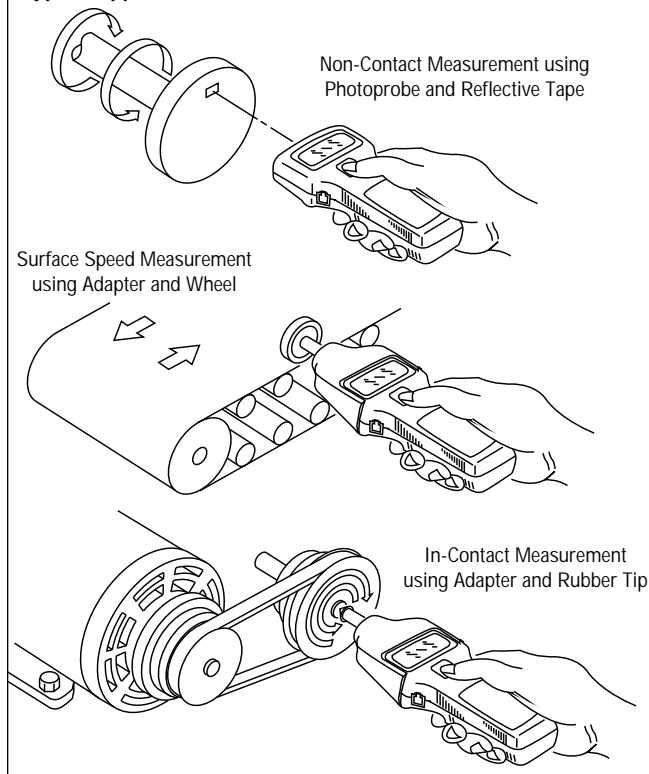
**Display:** 6 digit LCD; low battery and reflective light input indicators

**Display Hold:** 3 minutes from last measurement then auto power-off

**Power Requirements:** (4) 1.5V batteries, AAA size, included. 20 hours continuous measurement

**Operating Temperature:** 40° to +104°F (5° to +40°C)

### Typical Applications:



Model No.	Description
HT50 01	Hand Tachometer System (Includes: Hand Tachometer; In-Contact Adaptor; Rubber Tips (3 pcs.); Reflective Tape (10 sheets); Surface Speed Wheels (1/10 m/min and 1/10 yd/min); Carrying Case; Dry Batteries (4-AAA size, 1.5 V); Instruction Manual)
605830-0001	Accessory Remote Probe
576008-394	Replacement Rubber Tip for In-contact Adaptor
576008-395	Replacement 1/10 Yard Wheel
576008-396	Replacement 1/10 Meter Wheel
605831-0001	Replacement In-contact Adaptor
616483-001	Reflective Tape (Replacement)

### Dimensions:

