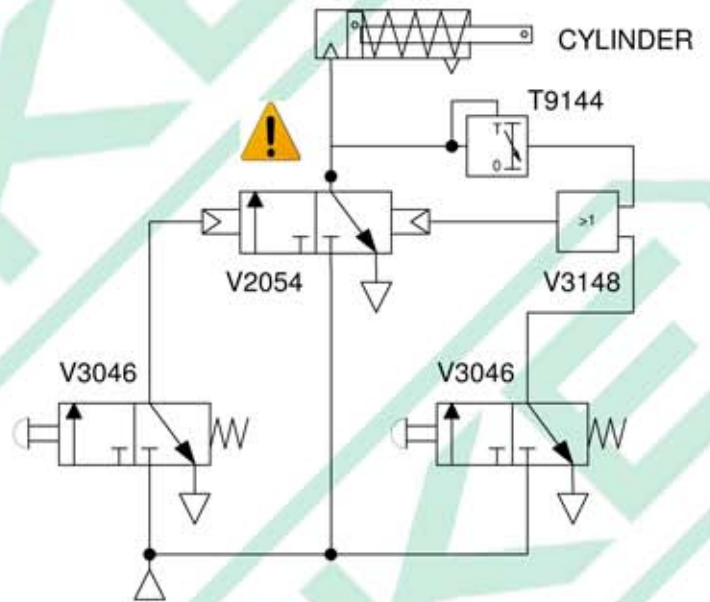
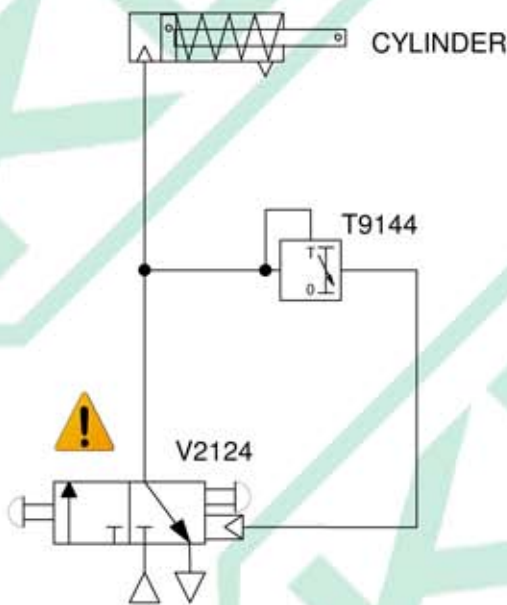


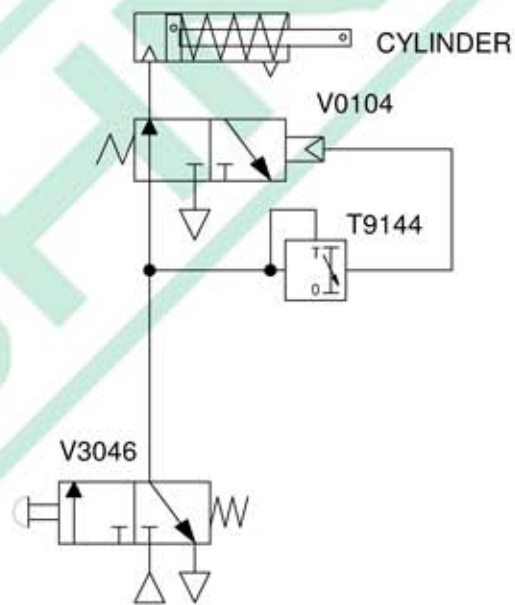
Circuit 1
Unattended - Timed automatic stop with manual stop and reset
Single button system.



Circuit 2
Unattended - Timed automatic stop with manual stop
Dual button system.




Circuit 4
Unattended - Timed automatic stop with manual stop
Single button system.



Circuit 3
Attended - Timed maximum automatic stop
Single button system.

CAUTION:

 Upon applying air system may start automatically.
Minimum time required for filling reservoir.

NOTES:

Clean dry non lubricated air to be used.
Timers should never be adjusted while in operation.
Pressures should not exceed timer specification.

These circuits have been designed as a concept/theory only. It is your responsibility to ensure that these details comply will all safety standards and regulations. We cannot accept responsibility for it's application. Pneumatic cylinders have been used to illustrate output functionality only. Schematic diagrams shown here may vary from actual parts supplied, although functionality will remain the same.

H.Kuhnke Limited
Unit 21, Abbey Enterprise Centre
Premier Way, Romsey
Hampshire SO51 9AQ
Tel +44 (0)1794 514445
Fax +44 (0)1794 513514

Date : 6th July 2010
Drawing Number 0010031

Title: Single Shot Timer Circuits

www.thetimerandcountercompany.com

REVISION

2					
---	--	--	--	--	--

Author: Rob Dunn

