

## Types 344-346



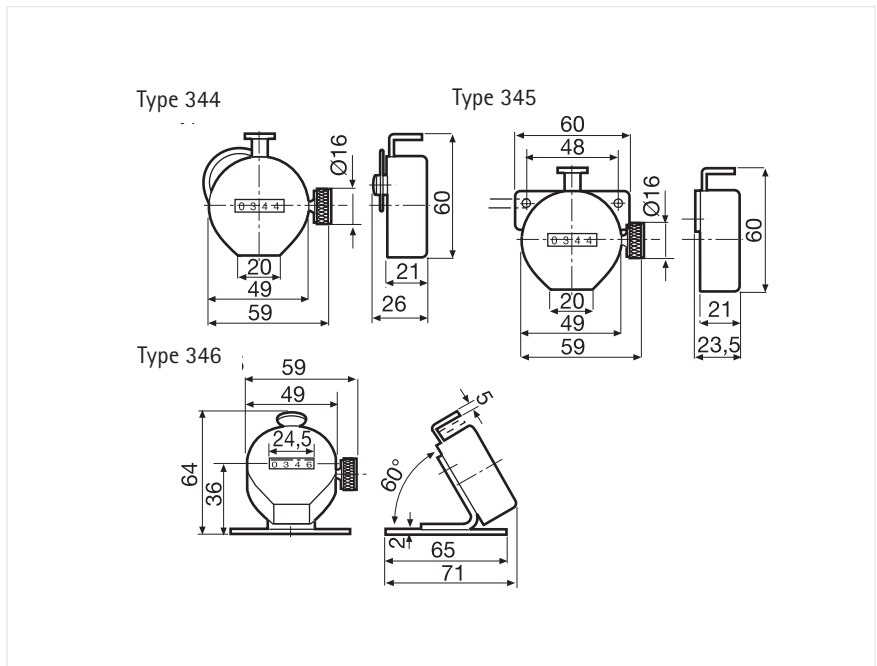
Type 344

### TECHNICAL DATA

- 4-digit display
- Resettable with rotary knob
- Rugged, easy to operate
- Maintenance-free operation

Display	4-digit
Digit height	4 mm
Mounting	depending on version, handheld with thumb ring, wall or table-mounted
Cover	plastic (ASB) red, metal on request
Weight	approx. 95 g
Counting mode	adding, 1 stroke = 1 increment
Reset	rotary knob on the right-hand side

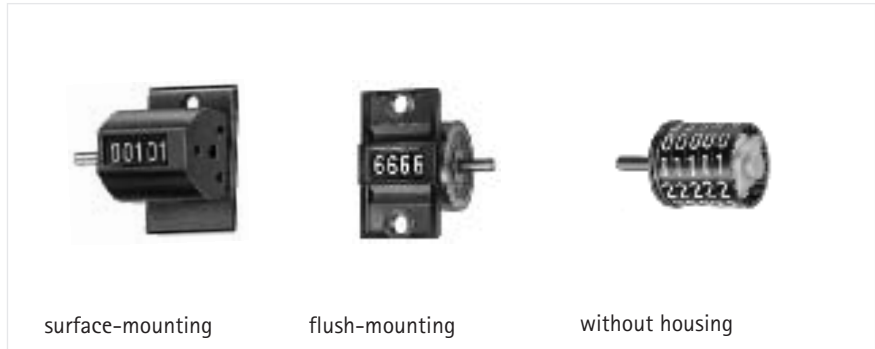
### DIMENSIONS



### ORDER INFORMATION

Hand tallys with thumb ring	Ordering code 0 344 001
Hand tallys for wall-mounting	Ordering code 0 345 001
Hand tallys for table-mounting	Ordering code 0 346 001

# Revolution- or Stroke Counters Types 101/103 301/309



- 4- or 5 digit display
- Without reset
- With or without case
- Miniature size

## CASE

Counters in this series are available with surface-mounting case, with flush-mounting case or without any housing.

## TECHNICAL DATA

Display	4 or 5-digit, depending on version
Digit height	4.2 mm
Mounting	depending on version
Case	plastic (POM) black
Weight	approx. 5 g, with case approx. 9 g
Counting mode	Revolution counter: + (-) adding in the specified direction, subtracting in reverse direction. Stroke Counter: + is fixed, adding
Transmission ratio	1:1 or 1:10, depending on version
Max. speed	Revolution counter: 1.000 rpm, at a transmission ratio of 1:10 max. 100 rpm. Stroke counter: max. 500 strokes/min., switching distance min. 46°, max. 49°
Torque	Revolution counter: 0.05 Ncm, Stroke counter: 1.0 Ncm
Reset	none

## DIMENSIONS

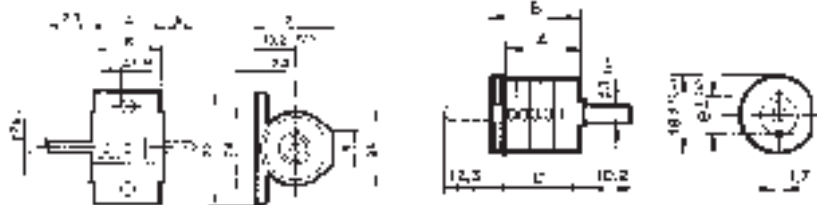
Type 101/301  
surface-mounting case

Type 101/301 surface mounting case

	A	B
4	19.5	18.5
5	22.5	21.5

Type 101/301 without case

	A	B	C
4	13.5	15.5	17.6
5	16.5	18.5	20.6



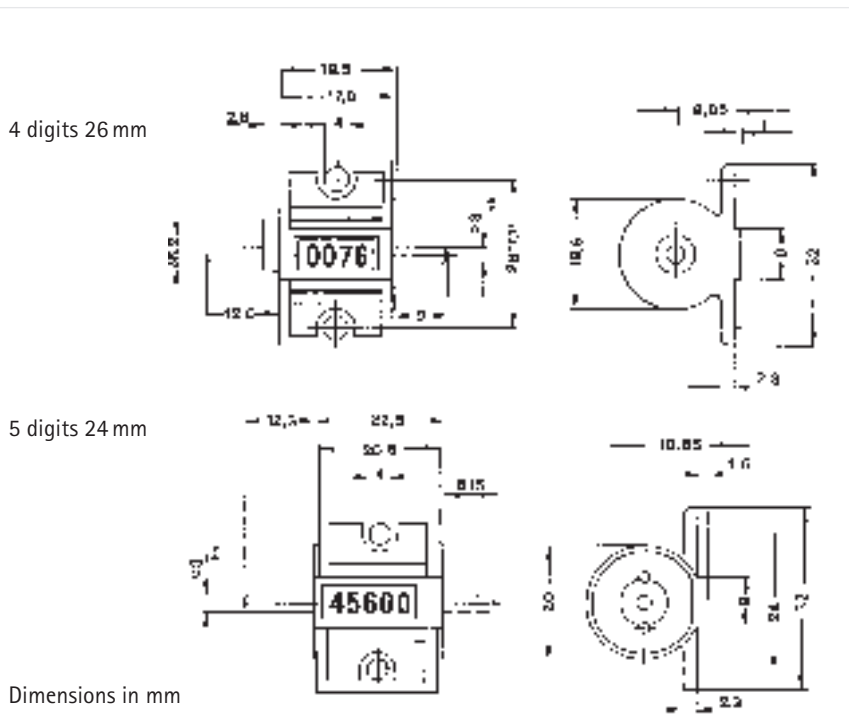
Dimensions in mm

# Types 101/103 301/309

## DIMENSIONS

Typ 103/309 flush mounting case

## Technical data



## ORDER INFORMATION Revolution Counters

Ratio

Case	Number of digits	Actuation/sense of rotation				
		Bz	Bw	Bz	Bw	
1:1	Surface	4	0 101 605	0 101 606*	0 101 607	0 101 608
		5	0 101 609	0 101 610	—	—
	flush	4	0 103 605	0 103 606	0 103 607	0 103 608
		5	—	—	—	—
1:10	Surface	4	0 101 505	0 101 506	0 101 507	0 101 508
		5	0 101 613	0 101 614*	0 101 615*	0 101 616
	flush	4	0 103 505	0 103 506	0 103 507	0 103 508

## Stroke Counter

Case	Number of digits	Actuation/sense of rotation			
		Bz	Bw	Bz	Bw
Surface	4	0 301 505	0 301 506	0 301 507	0 301 508
	5	0 301 509	0 301 510	0 301 511	0 301 512
flush	4	0 309 505*	0 309 506*	0 309 507*	0 309 508*
	5	0 309 509	0 309 510*	0 309 511*	0 309 512*
without	4	0 301 401*	0 309 402	—	—
	5	0 301 405*	—	0 301 407*	0 301 408*

Stroke lever 0 600 007

For further stroke levers see accessories

\* on request  
Inquire for other versions

## Revolution and Stroke Counters Type 125 with Button Reset

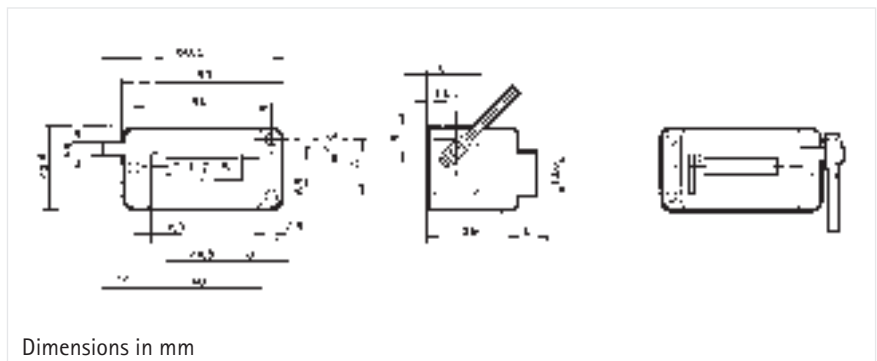


- 4 or 5-digit display
- With button reset
- Miniature size
- Protection class IP 50

### TECHNICAL DATA

Display	4 or 5-digit, depending on version
Digit height	4 mm
Base plate	burnished sheet steel
Case	plastic, (PPO), glassfibre-reinforced, black
Cover	plastic (ASB) grey, (on request also available in black)
Weight	approx. 50 g
Counting mode	revolution counter: + (-), stroke counter: +
Transmission ratio	1:1 or 1:10, depending on version
Max. speed	1.500 rpm, with transmission 1:10 500 rpm (revolution counter only)
Switching distance	min. 18° (only stroke counter)
Max. stroke rate	500 strokes/min (stroke counter only)
Reset	manual reset with button
⚠	Don't push the reset pushbutton during the process

### DIMENSIONS



### ORDER INFORMATION

Revolution counter

Stroke counter

Actuation	Sense of rotation	4-digit, transmission ratio		5-digit, transmission ratio	
		1:1	1:10	1:1	1:10
☐	Bz	0 125 101	0 125 111	0 125 105	0 125 115
☐	Bw	0 125 102	0 125 112	0 125 106	0 125 116
☐	Bz	0 125 103	0 125 113	–	–
☐	Bw	0 125 104	0 125 114	0 125 108	0 125 118
☐	Bz	0 125 301	–	0 125 305	–
☐	Bw	0 125 302	–	0 125 306	–
☐	Bz	0 125 303	–	0 125 307	–
☐	Bw	0 125 304	–	0 125 308	–

Stroke lever Ordering code 0 600 026 Other stroke levers available on request

## Type 125

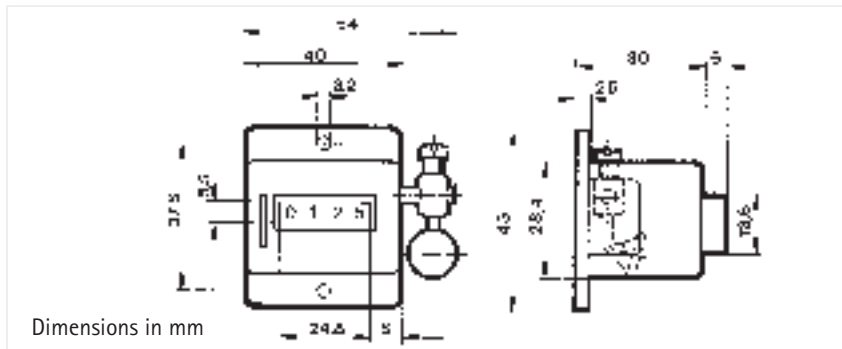


## TECHNICAL DATA

- 4-digit display
- Button reset
- Rugged, easy to operate
- Maintenance-free operation

Display	4-digit
Digit height	4 mm
Mounting	wall-mounted, magnetic attaching plate available
Cover	plastic (ASB) grey
Baseplate	sheet steel, burnished
Weight	approx. 70 g
Counting mode	adding, 1 stroke = 1 increment
Reset	manual with button
⚠	Don't push the reset pushbutton during the process

## DIMENSIONS



## ORDER INFORMATION

Counter	Ordering code 0 125 342
Accessory stroke lever	Ordering code 0 600 065
Magnetic attaching plate	Ordering code 1 125 009

# Revolution, Length, Stroke Counters

Type 150

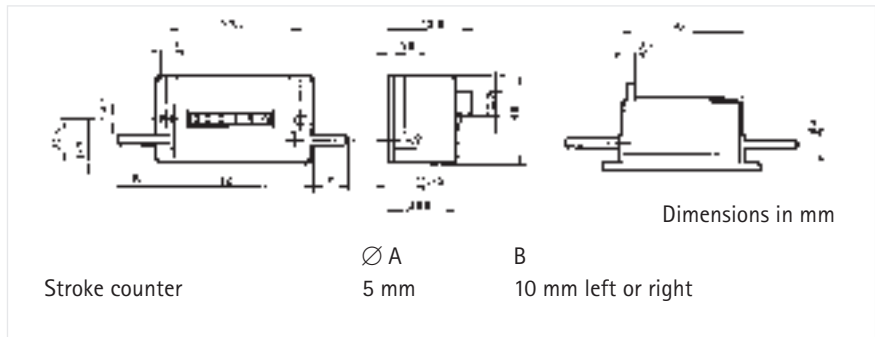


## TECHNICAL DATA

- Approved for calibration applications by the PTB (German Federal Institute for Physics and Technology)
- With button reset
- 6-digit display
- Protection class IP 50

Display	6-digit
Digit height	4 mm
Case	plastic, (PA), glassfibre-reinforced, black
Cover	plastic (ASB), grey
Weight	approx. 70 g
Counting mode	+ (-), stroke counter: +
Transmission ratio	1:1, 1:2 or 1:10, depending on version
Max. speed	revolution counter: 3000 rpm, length counter 1500 rpm
Max. stroke rate	500 strokes/min (stroke counter only)
Torque	approx. 0.2 Ncm, stroke counter: approx. 5 Ncm
Actuating travel	min. 37° max. 43° (stroke counter only)
Reset	- with button, tactile touch 12 N - key reset available on request
⚠	Don't push the reset pushbutton during the process

## DIMENSIONS



## ORDER INFORMATION

Revolution counter  
Length counter  
Stroke counter

Actuation	Sense of rotation	Indication	Unit	Transm. ratio 1:1 Ordering code	Transm. ratio 1:2 Ordering code	Transm. ratio 1:10 Ordering code
☐	Bz	999 999	-	-	-	0 150 103
☐	Bw	999 999	-	-	-	0 150 104
☐	Bz	99 999.9	m/dm	-	0 150 201	-
☐	Bw	99 999.9	m/dm	-	0 150 202	-
☐	Bz	999 999	-	0 150 301	-	-
☐	Bw	999 999	-	0 150 302	-	-
☐	Bz	999 999	-	0 150 303	-	-
☐	Bw	999 999	-	0 150 304	-	-

Stroke lever 0 600 003 For further stroke levers see accessories  
Protective cover Ordering code 2 150 056\*

\* on request  
For measuring wheels see accessories. Inquire for other versions.

## Type 205

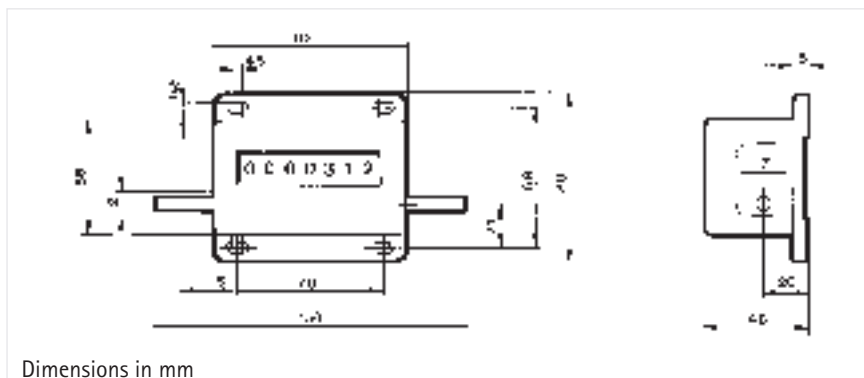


### TECHNICAL DATA

- 7-digit display
- Large 8 mm digits
- With key reset
- Protection class IP 53

Display	7-digit (999999.9 m/dm)
Digit height	8 mm
Protection class (DIN 4050)	IP 53
Case	die-cast zinc, black
Cover	plastic (ASB), grey
Weight	approx. 430 g
Counting mode	+ (-) adding in specified direction, subtracting in reverse
Transmission ratio	1:2, 1:5 or 1:10, depending on version
Max. speed	3000 digits/min
Torque	0.5 Ncm
Reset	manual reset with removable key on either side
⚠	Don't push the reset pushbutton during the process

### DIMENSIONS



### ORDER INFORMATION

Actuation	Sense of rotation	Transmission ratio 1:2	Transmission ratio 1:5	Transmission ratio 1:10
☐	Bz	0 205 003	0 205 001	0 205 005
☐	Bw	-	0 205 002	0 205 006

Inquire for other versions  
For measuring wheels see accessories

# Revolution, Length, Stroke Counters

Type 225

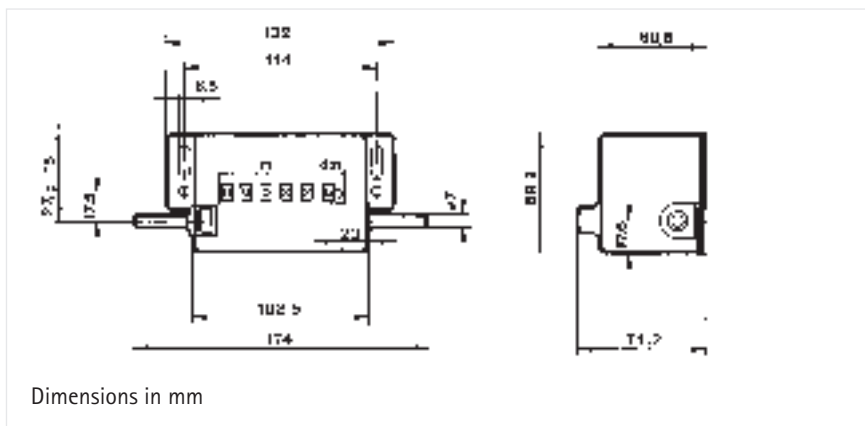


- Approved for length counting by the PTB (German Federal Institute für Physics and Technology)
- 6-digit display
- Large digits, 6.5 mm high
- Button reset
- Counter with suspension device
- Adjustable counterweight
- 6-digit display m/dm or m/cm
- Button reset

## TECHNICAL DATA

Display	6-digit
Digit height	6.5 mm
Base plate	burnished sheet steel
Case	die-cast metal
Cover	plastic (ASB), grey
Weight	approx. 750 g
	Counter with suspension device and downward weight approx. 2.400 kp. Downward weight can be shifted in order to regulate contact pressure
Counting mode	+ (-), stroke counter: +
Transmission ratio	1:1, length counter 1:5 or 1:50
Max. speed	10000 digits/min, stroke counter 800 strokes/min
Torque	1.2 Ncm, stroke counter 8.0 Ncm
Actuating angle	min. 38°, max. 55° (stroke counter only)
Reset	button reset, secured against unauthorized operation
⚠	Don't push the reset pushbutton during the process

## DIMENSIONS



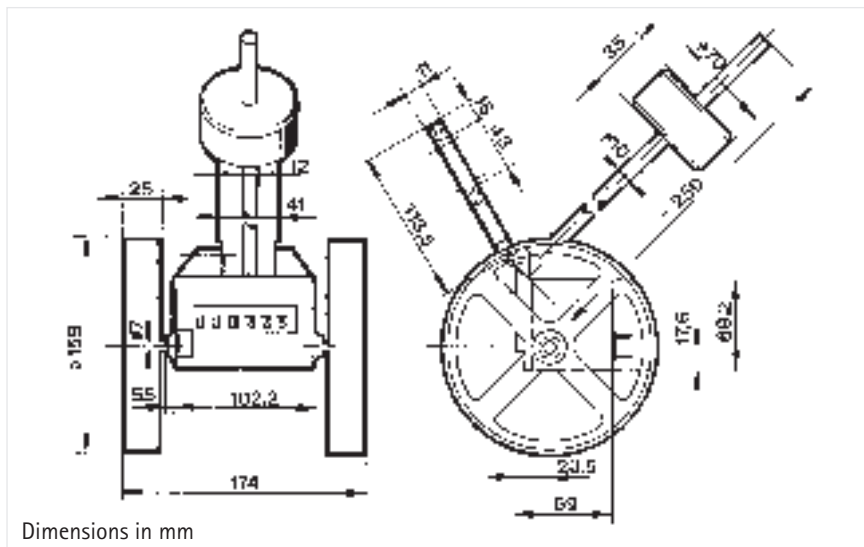
Totalizing Counters

# Type 225

## DIMENSIONS

Counter with suspension device

## Technical data



Dimensions in mm

## ORDER INFORMATION

- Revolution counter
- Length counter
- Length counter with suspension device
- Stroke counter

Actuation	Sense of rotation	Indication Unit	Trans. ratio 1:1		Trans. ratio 1:5		Trans. ratio 1:50	
			Ord. code	Unit	Ord. code	Unit	Ord. code	Unit
<input type="checkbox"/>	Bz	999 999	0 225 001	-	-	-	-	-
<input type="checkbox"/>	Bw	999 999	0 225 002	-	-	-	-	-
<input type="checkbox"/>	Bz	99 999.9 m/dm	-	0 225 003 m/dm	0 225 007 m/cm	-	-	-
<input type="checkbox"/>	Bw	99 999.9 m/dm	-	0 225 004 m/dm	0 225 008 m/cm	-	-	-
<input type="checkbox"/>	Bz	99 999.9 m/dm	-	0 225 501 m/dm	0 225 505 m/cm	-	-	-
<input type="checkbox"/>	Bw	99 999.9 m/dm	-	0 225 502 m/dm	0 225 506 m/cm	-	-	-
<input type="checkbox"/>	Bz	999 999	0 225 301	-	-	-	-	-
<input type="checkbox"/>	Bw	999 999	0 225 302	-	-	-	-	-

Stroke lever	Ordering code 0 600 005	For other stroke levers see accessories
Panel frame	Ordering code 1 250 056	See accessories for description

\* on request  
 For measuring wheel see accessories, they are not included in normal delivery