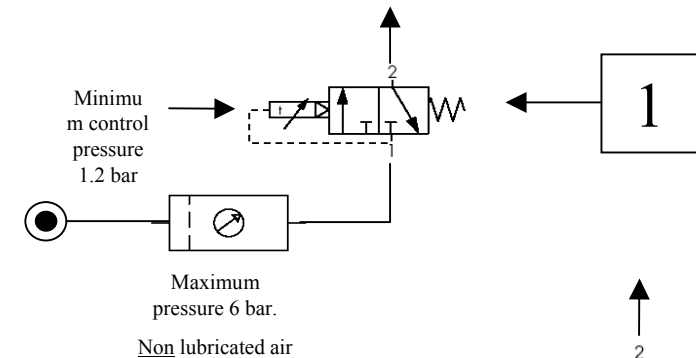
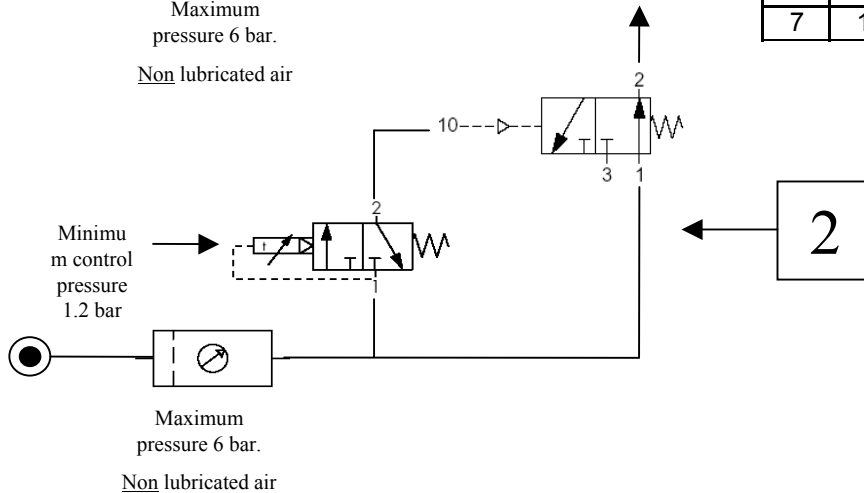


Typical circuit for timing air on or timing air off



PARTS LIST CIRCUIT 1			
1	1	51.020.30.00	20-300 seconds mini timer M5 ports
2	1	50.686	Filter regulator G1/8 ports manual drain
3	1	50.623.01	Mounting bracket for 50.686
4	1	50.622.01	Gauge 40mm diameter 0-10 bar
5	2	52.170	Male stud fitting G1/8 - 4mm
6	2	52.010	Male stud fitting M5 - 4mm
7	1	50.203	Black tubing 4mm - 25mtrs



PARTS LIST CIRCUIT 2			
1	1	76.026.71.31	Valve 3/2 normally open pilot/spring return G1/8
2	1	51.020.30.00	20-300 seconds mini timer M5 ports
3	1	50.686	Filter regulator G1/8 ports manual drain
4	1	50.623.01	Mounting bracket for 50.686
5	1	50.622.01	Gauge 40mm diameter 0-10 bar
6	5	52.170	Male stud fitting G1/8 - 4mm
7	2	52.010	Male stud fitting M5 - 4mm
8	1	50.203	Black tubing 4mm - 25mtrs
9	1	52.050	T piece 4mm
10	1	58.301.03	Silencers G1/8

H.Kuhnke Limited

Unit 21, Abbey Enterprise Centre

Premier Way

Romsey

Hampshire

SO51 9AQ

This circuit shows how to configure a normally closed mini timer (Drawing 1, normally closed function) to be used as a normally open mini timer (Drawing 2, normally open function).

Author Rob Dunn 10th December 2002

Tel 01794 514445

Fax 01794 513514

KUHNKE

IMPULSES FOR AUTOMATION