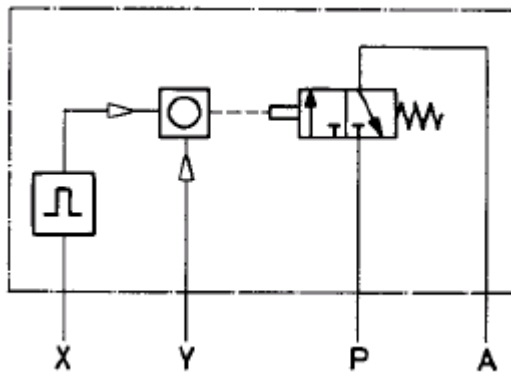
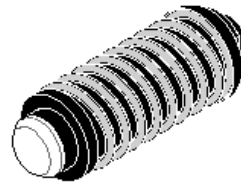


Circuit for timing air on for filter changing



X = air intake timing element
Y = pneumatic reset

P = air intake
A = output signal



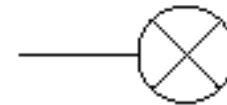
When the pre-selected time range has elapsed the circuit will give an output to cut the air supply off to the existing filter and the air intake element. Once the filter has been changed the front cover can be unlocked and the reset button can be pushed to start timing once again.

KUHNKE

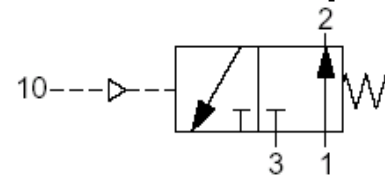
Notes

Only use clean dry filtered air for the timer.

Pressure range 2-6 Bar.



Existing
Filter Unit



PARTS LIST		
1	0.497.654	5 DIGIT MINUTE INDICATION WITH M5 CONNECTIONS
1	1.405.614	FRONT COVER WITH LOCK
1	50.521	BLACK/RED INDICATOR M5 CONNECTIONS
1	76.026.71.31	PILOT/SP RTN VALVE N/O G1/8

H.Kuhnke Limited, Unit 21, Abbey Enterprise Centre,
Premier Way, Romsey, Hampshire, SO51 9AQ

Author Rob Dunn 13th March 2003

Tel 01794 514445 Fax 01794 513514

KUHNKE

IMPULSES FOR AUTOMATION