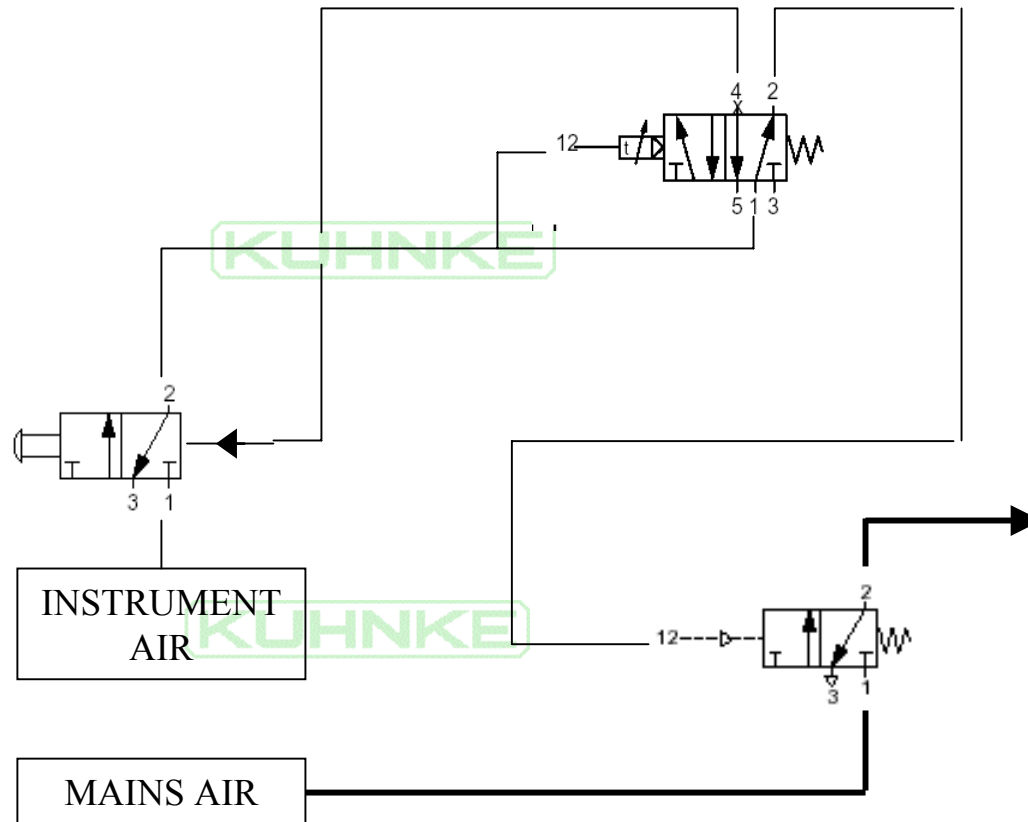


Standard timing circuit for actuating a pilot valve



PARTS LIST

1	1	54 series timer
2	1	3/2 push/pull valve with pilot return
3	1	3/2 pilot/spring valve normally closed
Exact Kuhnke part numbers available upon request		

Notes :

Only clean dry air should be used for this timing circuit we would recommend a 5 micron filter.

The timer should not be adjusted while operating as this will cause a conflict with the internal mechanism.

Min/Max pressures for this circuit are 1.2-10 bar.

Choose from any of our 6 time ranges available.

For simplicity no air treatment components (I.e filters & regulators) are shown.

If you intend this circuit to be used with other media such as inert gases or hydraulics instead of mains air please contact us.

This timer circuit will start timing the air on cycle when the start button is pushed. It will stop automatically when the desired time has elapsed. To stop the timing mid cycle pull out the push button.

H.Kuhnke Limited, Unit 21, Abbey Enterprise Centre,
Premier Way, Romsey, Hampshire, SO51 9AQ

Author Rob Dunn 12st February 2003

Tel 01794 514445 Fax 01794 513514

KUHNKE

IMPULSES FOR AUTOMATION